



The **complete** refinishing solution





Tetrosyl has been working within the Refinish Industry for over 50 years. Tetrosyl's experience and technical expertise has developed a superior advanced waterborne paint system, aqua-t that meets the demands of the VRG market.

Aqua-t waterborne colour system complies with all the latest VOC emission legislation and provides bodyshops with an economic, high quality and simple solution to becoming compliant. Continual research and development into bodywork perfection has developed a comprehensive range of variomorphonic compounds and a variosurface bodyfiller.

Tetrosyl refinishing provides a complete range for the vehicle refinishing market.

The Colour Coatings Development Centre is fully staffed and equipped to look after the needs of the refinishing & crash repair markets sectors, with products developed in-house and extensively tested in both the laboratory and the test market. These facilities include 2 full-sized low-bake spray booths & ovens, industry standard bench-top and hand-held spectrophotometers, including multi-angle, using the latest software for predictive matching and quality consistency.

This centre studies new developments in materials technology from our supplier partners, to enable us to bring these developments quickly into products. We utilise such equipment as GC, FT-IR, Coulometric titrometer, Rheometer, accelerated weathering machine, Digital Electron Microscope etc etc. These items of equipment enable us to remain at the forefront of product developments but especially in resin and polymer technology, colour trends, nano technology and the latest advancements in water-based technology.

Adam Mather (BSc, MRSC, CCHEM, CSci)
Group Technical Manager



Contents



- 1 *Panel Wipes*
- 2 *Fillers*
- 3 *Primers*
- 4 *Thinners*
- 5 *Aqua-t Colour Base System*
- 6 *Clearcoats*
- 7 *Compounds*
- 8 *Specialist Paints*
- 9 *Paints & Primers*
- 10 *Underbody*
- 11 *Masking/Paper Products*
- 12 *Ancillaries*

1

Panel wipes

New



Panel Perfection

A waterbased preparation for cleaning and degreasing car body panels, prior to refinishing/painting. At less than 200g/l VOC content, it fully complies with all relevant EU legislation.

Product	Case Qty	Size	Code	Barcode
NEW Panel Perfection (Trigger)	6	1L	WSP010	5010372018690
Panel Perfection	4	5L	WSP050	5010372017761

Pre-Wipe Degreaser

A preparation product for cleaning panels of oil, grease, waxes, flatting residues, finger marks and reduces the risk of silicone contamination. Can also be used for cleaning prior to polishing.

Product	Case Qty	Size	Code	Barcode
Pre-Wipe Degreaser	4	5L	PWD005	5010372014258



New



Acetone

A preparation product for removing greases and waxes from surfaces which are to be bonded, repaired or primed. Also can be used for cleaning tools and brushes while working with polyester, vinyl ester and epoxy resins.

Product	Case Qty	Size	Code	Barcode
NEW Acetone	4	5L	TAC050	5010373071618
NEW Acetone	1	25L	TAC025	5010373072950



Quick... Easy... Super Smooth





MicroFlo 20® Glazing Putty

The latest in our new range of flowable fillers, which is suitable for all metal substrates. Two component* chemical liquid used for the final skimming of a polyester putty repair. Combines great levelling properties together with easy sanding.

	Product	Case Qty	Size	Code	Barcode
NEW	MicroFlo 20® Glazing putty *(Includes Hardener)	6	440ml	MFG500	5010373069981

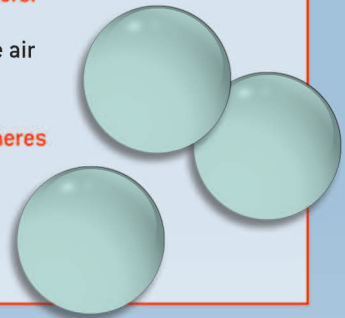


High tech polyester resin system optimises its compatibility with numerous substrates like galvanised steel, zinc, aluminium, steel, GRP and many others.

Specially vacuum mixed to eliminate air entrapment and defects.

Expanded gas filled plastic microspheres allow the production of lightweight and easy to sand fillers.

Does not clog abrasive papers.



Fast 20 Ultra Lightweight Bodyfiller

An all-purpose ultra-lightweight bodyfiller suitable for application to numerous substrates. With micro cellular technology and an advanced easy to mix formula, Fast 20 makes sanding easy with an extra smooth finish.



	Product	Case Qty	Size	Code	Barcode
NEW	Fast 20 Bodyfiller	6	1L	FBF010	5010373071601
NEW	Fast 20 Bodyfiller	2	3.5L	FBF035	5010372018737



UltraSmart 2K Bodyfiller

A lightweight and easy to sand bodyfiller, suitable for use on Steel, GRP, Aluminium, Wood, Stone and most Plastics.

	Product	Case Qty	Size	Code	Barcode
	UltraSmart 2K Bodyfiller	12	250g	USB025	5010372015521
	UltraSmart 2K Bodyfiller	6	600g	USB600	5010372007403

Color Cure 2K Fibrofil



A tough Bodyfiller reinforced with fibre glass to give a solid and vibration resistant repair. Ideal for bridging and filling holes in metal and glass fibre surfaces.

Product	Case Qty	Size	Code	Barcode
Color Cure 2K Fibrofil	6	1L	CCF010	5010372013855
Color Cure 2K Fibrofil	4	2L	CCF020	5010372013695

Glass Fibre Matting

For the bridging of large holes in bodywork, in conjunction with Tetrosyl Polyester Resin.



Product	Case Qty	Size	Code	Barcode
Glass Fibre Matting	12	1 sq.m	GFM001	5010372720609



Polyester Resin

A Multipurpose resin with controllable setting time for moulding, fabricating and repairing steel, alloy or aluminium (with Etch Primer), glass fibre reinforced plastic, wood, stone etc. Can also be used as a powerful adhesive. Resistant too many solvents, acids, alkalis, oils and salt water.

Product	Case Qty	Size	Code	Barcode
Polyester Resin	6	1L	POR001	5010372012643
Polyester Resin	4	2.5L	POR002	5010372012650

Color Cure 2K Stopper

A fine surface pinhole free polyester stopper ideal for minor repairs, dents and scratches. Sets in minutes, creating an easy to sand, tough and smooth repair.

Product	Case Qty	Size	Code	Barcode
Color Cure 2K Stopper	6	1L	CCS010	5010372013862



3

Primers



Process 540 Primer

Fast Drying 2K HS Primer is for use under basecoats and topcoats. It provides good adhesion and appearance, while offering a fast drying time and easy to sand qualities.

Product	Case Qty	Size	Code	Barcode
2K HS Grey Primer	6	1L	GLG010	5010372015903
2K HS Grey Primer	2	3.5L	GLG004	5010372017303
2K HS Charcoal Primer	6	1L	GCP001	5010372017310
2K HS Charcoal Primer	2	3.5L	GCP004	5010372017327

Process 540 Activator

Activator for 2K HS Primers has been specially designed to offer excellent performance. Different speeds of activator are available, for all refinishing needs.

Product	Case Qty	Size	Code	Barcode
Standard Activator for HS Primer	6	1L	GPM001	5010372014548
Fast Activator for HS Primer	6	1L	GPF001	5010372014562
Fast Activator for HS Primer	12	250ml	GPF250	5010372017754



Process 540 Thinner

Formulated for use with 2K HS Primers, the thinner has been specially treated for maximum performance.

Product	Case Qty	Size	Code	Barcode
Thinner for HS Primer	6	1L	GPT001	5010372014586

Etch Primer

A Chromate free, fast drying etch primer designed especially for use on the repair of rub through areas and on substrates such as galvanised steel & aluminium. Etch primer does not require sanding, just overcoat with primer before colour application. Thinner is specially formulated to maximise the performance of Tetrosyl Etch Primer.



Product	Case Qty	Size	Code	Barcode
Etch Primer	6	1L	GEP001	5010372881409
Etch Primer	2	5L	GEP005	5010372881508
Activated Thinner for Etch Primer	6	1L	GET010	5010372012360
Activated Thinner for Etch Primer	4	5L	GET050	5010372881706
Etch Primer (Aerosol)	12	500ml	AEP500	5010372003344
Etch Primer Kit (GEP001 + GET010)	12	1L	GPT100	-
Etch Primer Kit (GEP005 + GET050)	8	5L	GPT105	-



Plastic Primer

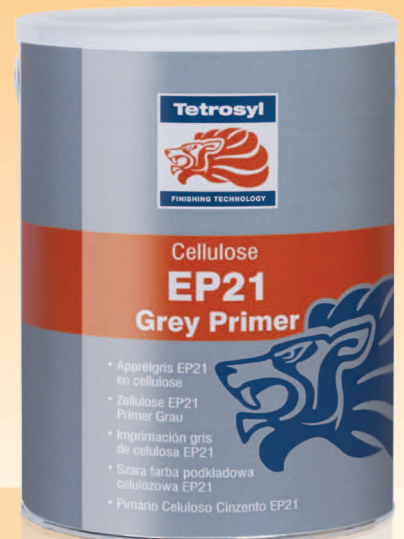
A ready to use adhesion promoting plastic primer for preparing the surfaces of all plastics prior to the application of colour. Tetrosyl plastic primer avoids the need to identify the plastic substrate.

Product	Case Qty	Size	Code	Barcode
Plastic Primer	6	1L	PLP010	5010372015071

Cellulose EP21 Grey Primer

A high build, fast drying and easy to sand cellulose primer surfacer. Combining excellent adhesion to bare metal, exceptional 'hold-out' and build. Dries to a smooth finish suitable for use under most topcoat finishes.

Product	Case Qty	Size	Code	Barcode
EP21 Grey Primer	2	5L	EPS050	5010372750804



4

Thinners

Standard Thinners

Ideal for use as a cleaning product or colour mixing in commercial and industrial applications. A preparatory and pre-cleaning product.

Product	Case Qty	Size	Code	Barcode
Standard Thinners	4	5L	STT005	5010372730103
Standard Thinners	1	25L	STT025	5010372730202
Standard Thinners	1	205L	STT450	5010372730301
Autocraft Thinners	4	5L	STA005	5010372017792
Autocraft Thinners	1	25L	STA025	5010372017808



Gun Wash

Solely for use in the cleaning of solvent borne spray equipment.

Product	Case Qty	Size	Code	Barcode
Gun Wash	4	5L	GUN005	5010372998480
Gun Wash	1	25L	GUN025	5010372732008



Universal 2K Thinner

Ideal for thinning primer. Suitable for use with solvent, base coat and solid colour paints.

Product	Case Qty	Size	Code	Barcode
NEW Universal 2K Thinner	4	5L	UTH005	5010373071335



Waterbased Gun Cleaner

For cleaning spray equipment used for compliant materials.

Product	Case Qty	Size	Code	Barcode
Waterbased Gun Cleaner	1	25L	AQG025	5010372013916

5

Aqua-t

aqua-tTM



- Aqua-t is a full waterborne paint system, not a Hybrid/Solvent based system.
- This method can guarantee the same paint finish every time, using the easily repeatable aqua-t method.
- This highly flexible paint system gives the body shop the ability to use chromatic swatches, manufacturer colour code spectrometer to match your customers vehicle colour exactly and produce the exact quantities required to reproduce this colour with aqua-t paints.
- Our aim is to simplify colour matching by getting the bodyshops to 'Forget the car, just look at the colour'.
- With currently around 55,000 colours in the aqua-t database, you should always be able to find the right colour.
- If not, a technical team is available to take a panel and match a colour within 3 days or less, then get it added into the aqua-t database.
- By removing the solvent part of the bodyshops paint systems, it means reduced gun cleaning, reduced solvent usage, a reduction in harmful fumes and reduces the amount of solvent that needs to be disposed of. Even tap water can be used to clean out spray guns after using aqua-t.
- Also meaning no specialist ventilation is required in the spray booth. Another cost reduction.
- A giant pitfall in solvent based systems is the differing drying times produce different finishes, but not with aqua-t. No matter what the drying time you will get the same colour finish every time.
- Another difficulty with solvents is figuring out whether it is dry or not, again this is not an issue you need to worry about when using aqua-t.
- Aqua-t waterborne system has been developed for ease of use, enabling bodyshops to make less mistakes and spend less time finishing a customer's vehicle, enabling more vehicles to pass through the doors.
- Aqua-t provides a fantastic colour matching system, great technical help and marketing support for all your needs.



Aqua-t Colour Base System

Sizes

Aqua-t is available in a variety of sizes: 250ml, 500ml, 1L, 5L & 20L.

The number for the colour will stay the same but the prefix will determine the size of product.

e.g. Super White AQA001 = 1L
Super White AQB001 = 20L

Size	Prefix
250ml	AQM
500ml	AQA / AQM
1L	AQA
5L	AQC
20L	AQB

Solid Colours

Aqua-t solid colours are manufactured by employing the latest technology, which provides high chroma from pigments, maximises colour fastness and durability, and ensures a deep lustrous base coat.



Product	Available Sizes	Product Code
Super White	500ml / 1L / 5L / 20L	...001
Special Black	500ml / 1L / 5L / 20L	...002
Cool Yellow	500ml / 1L / 5L / 20L	...003
Mediterranean Green	500ml / 1L / 5L / 20L	...004
Orange	500ml / 1L / 5L / 20L	...005
Teal Blue	500ml / 1L / 5L / 20L	...006
Maroon	500ml / 1L / 5L / 20L	...007
Strong Red	500ml / 1L / 5L / 20L	...008
Ruby Red	500ml / 1L / 5L / 20L	...009
Blue Violet	500ml / 1L / 5L / 20L	...010
Yellow Oxide	500ml / 1L / 5L / 20L	...011
Green	500ml / 1L / 5L / 20L	...013
Bright Amber	500ml / 1L / 5L / 20L	...014
Red Oxide	500ml / 1L / 5L / 20L	...015
Blue Haze	500ml / 1L / 5L / 20L	...016

Product	Available Sizes	Product Code
Black	500ml / 1L / 5L / 20L	...017
Red Violet	500ml / 1L / 5L / 20L	...018
Perm Red	500ml / 1L / 5L / 20L	...019
Claret	500ml / 1L / 5L / 20L	...020
Perm Blue	500ml / 1L / 5L / 20L	...021
Sunset Yellow	500ml / 1L / 5L / 20L	...022
Dense Black	500ml / 1L / 5L / 20L	...023
Speed Red	500ml / 1L / 5L / 20L	...024
Trans Red	500ml / 1L / 5L / 20L	...025
Trans Yellow	500ml / 1L / 5L / 20L	...026
Mid Blue	500ml / 1L / 5L / 20L	...027
Ferrox	500ml / 1L / 5L / 20L	...028
Green Yellow	500ml / 1L / 5L / 20L	...029
Trans Scarlet	500ml / 1L / 5L / 20L	...030
Super Black	500ml / 1L / 5L / 20L	...031



PREPARATION To ensure the best paint application make sure the preparation of the panel is finished perfectly. The final sanded finish should be no coarser grade than P400 and if you wish to blend the panel no lower than P800.

Clean the area to be painted with panel wipe and make sure all residue is removed. Use a Tack Cloth to wipe the surface before you start painting, a tack cloth is very important if you don't have ideal surroundings for your paint job to take place in.



MIXING COLOUR Mixing the Aqua-t is a simple process. Once the correct colour has been identified by checking the colour code and, if available, the swatch chip. Match against the adjacent panel in which to be painted. Weigh out the Aqua-t to the amount you desire, always remembering that 30% of water is added at the end. Once weighed out and mixed up, a test card could be sprayed to make sure the correct match is made. To ensure you will be happy with your paint selection, look at the colour under various lighting conditions both indoors and outdoors.



BASECOAT APPLICATION Applying waterborne basecoat is similar to solvent basecoat. You should hold your gun at a right angle to the surface being painted at a distance of 6-10 inches. All of the Aqua-t coats needs to be painted at a 2 bar pressure (30psi). A gun set up including a fluid tip of 1.2 is needed, any different and you may not get the desired paint finish. 2 full coats are applied, leaving enough time between coats for the basecoat to dry, this may take slightly longer than solvent basecoat but maintaining heat and good airflow will speed up the process. After applying the 2nd full coat and drying it fully, check to see that the area is fully covered and no primer or repair marks can be seen. Then a light drop (dust) coat should be applied. Still at 2 bar pressure and at half trigger apply the drop coat evenly, if blending; arcing away at the area you need to fade out the paint. Waterborne paints leave less overspray than solvent paints so using a Tack Cloth after applying the final drop coat is usually not necessary. If happy with your application move on to the clearcoat.



CLEARCOAT APPLICATION The Clearcoat application over Aqua-t will be the same as over a solvent paint. Make sure the paint is fully dry and a matte finish. If using the 420 Clearcoat, 1 light coat should be applied following a full coat without a flash off time. If using the SR Clearcoat 2 full coats should be applied with a 10 minute flash off between coats.



DRYING TIMES Drying times will vary depending on how the product will be cured. The recommended process is to flash off the last coat for 10 minutes and then bake for 30 minutes at 60°C panel temperature. Drying the clearcoat with an infra red lamp will have different times, just make sure the panel doesn't get too hot otherwise popping may occur. You can use an infra red laser thermometer to help you settle on how far the infra red lamp needs to be placed.



POLISHING Polishing the painted area is the same as polishing a panel painted in solvent basecoat, flat the area with 1500 or 2000 wet and dry paper, or if you prefer flat with 1500 discs and then you can Trizact 3000 it afterwards to make polishing slightly easier. Using Tetrosyl's Super VM Compound is a great way to polish the area to a high gloss, Tetrosyl's Final Finish Bodyshop Polish also protects the panel once finished.

* You must only use Tetrosyl products included together as one paint system. This means if you plan to use Aqua-t paint on your car, you must also use Tetrosyl reducer, hardener, sealer, primer, cleaner, paint and clearcoat for the entire project. You can't mix various products that are from different brands. They are all designed to be used as part of the same paint system



**Prime
Colour
Clearcoat**

Game, Set and Perfect Match



- Enduit illustré 420 de procédé
- Process 420 Transparentlack
- Barniz Process 420
- Lakier bezbarwny Process 420



** This image is for illustration only,
please refer to Aqua-t swatch set for accurate colour match.*

Metallics

Aqua-t metallic give exacting colour matches to modern effect paint finishes through the design of their tiny bronze, silver and gold metallic platelets.

Product	Available Sizes	Product Code
Light Aluminium	500ml / 1L / 5L / 20L	...101
Bright Aluminium	500ml / 1L / 5L / 20L	...102
Coarse Aluminium	500ml / 1L / 5L / 20L	...103
Sparkle Aluminium	500ml / 1L / 5L / 20L	...104
Silver Dollar	500ml / 1L / 5L / 20L	...105

Additives

Product	Available Sizes	Product Code
Clear	500ml / 1L / 5L / 20L	...201
Tone Controller	500ml / 1L / 5L / 20L	...202

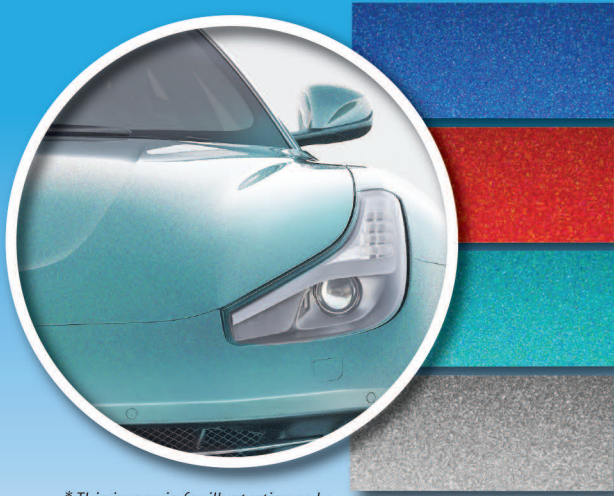
Product	Available Sizes	Product Code
White Pearl	500ml / 1L / 5L / 20L	...301
Ultrafine White Pearl	500ml / 1L / 5L / 20L	...302
Polar White Pearl	500ml / 1L / 5L / 20L	...303
Gold Pearl	500ml / 1L / 5L / 20L	...304
Fine Red Pearl	500ml / 1L / 5L / 20L	...305
Lilac Pearl	500ml / 1L / 5L / 20L	...306
Fine Blue Pearl	500ml / 1L / 5L / 20L	...307
Blue Pearl	500ml / 1L / 5L / 20L	...308
Fine Green Pearl	500ml / 1L / 5L / 20L	...309
Red Pearl	500ml / 1L / 5L / 20L	...310
Claret Pearl	500ml / 1L / 5L / 20L	...311
Frost Pearl	500ml / 1L / 5L / 20L	...312
Gold Flash	500ml / 1L / 5L / 20L	...313
Copper Pearl	500ml / 1L / 5L / 20L	...314
Satin Red Pearl	500ml / 1L / 5L / 20L	...315
Orange Flash	250ml / 500ml / 5L / 20L	...316



** This image is for illustration only,
please refer to Aqua-t swatch set for accurate colour match.*

Pearlescents

Aqua-t pearlescents are specially designed to maximise the shimmering effect of light refraction. The full pearlescent effect comes shining through from un-refracted light, depending on the angle it strikes the surface.



* This image is for illustration only, please refer to Aqua-t swatch set for accurate colour match.

Xirallics

Aqua-t xirallics are the latest developments in extreme colour intensiveness. They include tiny aluminium flakes which enhance the brilliant colours with a sparkling glitter finish.

Product	Available Sizes	Product Code
Crystal Silver	250ml / 500ml / 5L / 20L	...401
Sunbeam Gold	250ml / 500ml / 5L / 20L	...402
Radiant Red	250ml / 500ml / 5L / 20L	...403
Galaxy Blue	250ml / 500ml / 5L / 20L	...404
Stellar Green	250ml / 500ml / 5L / 20L	...405
Fireside Copper	250ml / 500ml / 5L / 20L	...406
Solaris Red	250ml / 500ml / 5L / 20L	...407
Cosmic Turquoise	250ml / 500ml / 5L / 20L	...408
Amethyst Dream	250ml / 500ml / 5L / 20L	...409

Reduced Colours

Aqua-t reduced colours are used for when a small precise amount of clean hue is needed to enhance a very light solid shade or to give a minute hint of colour to metallics or pearlescents.

Product	Available Sizes	Product Code
Reduced Green	250ml / 500ml / 5L / 20L	...501
Reduced Blue	250ml / 500ml / 5L / 20L	...502
Reduced Red	250ml / 500ml / 5L / 20L	...503
Reduced Black	250ml / 500ml / 5L / 20L	...504
Reduced Violet	250ml / 500ml / 5L / 20L	...505

* This image is for illustration only, please refer to Aqua-t swatch set for accurate colour match.



Additional Products

Aqua-t provides a complete solution for a Waterbased Paint System.

Product	Product Code	Product	Product Code
Complete Aqua-t Swatch Set	AQS100	Aqua-t Full size Stand	AQS204
Swatch Set part 1	AQS101	Aqua-t Mini Stand (Van mount)	AQS205
Swatch Set part 2	AQS002	Aqua-t Mini Stand (Mobile)	AQS206
Swatch Set part 3	AQS003	Aqua-t Colours Kit List	AQA701
Swatch Set part 4	AQS004	Aqua-t Colours + Ancillaries Kit List	AQA702
Swatch Set part 5	AQS005	Aqua-t Colours Mini Kit List	AQM701
Aqua-t Swatch Boards [Pair + Headers]	AQS200	Aqua-t Colours + Ancillaries Mini Kit List	AQM702
		Aqua-t thinner	AQT050



- No need for stirrers or pourers
- Simple shake and pour design
- Side labels for easy colour identification
- Initial installation starter packs available for all schemes
- Full technical, colour and marketing support packages available



Aqua-t Full Size Stand

- Space saving shelving
- 52 Base Colours in 1L
- 15 Base Colours in 500ml
- Full system designed for use in large bodyshops and distributors



Aqua-t Mini Stand (Mobile)

- Mobile storage platform & work station
- 52 Base colours in 500ml bottles
- 15 Base colours in 250ml bottles
- Mobile mini system designed for use in smaller bodyshops and workshops.

Aqua-t Mini Stand (Van Mount)

- Static shelving system
- 52 Base colours in 500ml bottles
- 15 Base colours in 250ml bottles
- Mini system designed for use in smaller bodyshops and distributors
- Designed for use with mobile operatives, which can be fitted into the rear of light commercial vehicles
- Online colour matching database for use on the move with mobile phones, tablets or laptops



aqua-tTM

Color Base



On reflection...
Perfection



6

Clearcoats

Process 420 Clearcoat

2K HS Clearcoat is formulated to offer high build, good adhesion and durability. With less than 420g/L VOC, it complies with EU legislation. It requires no thinning and is easy to polish. The activator for 2K HS Clearcoat has been specially designed to offer excellent performance.

Product	Case Qty	Size	Code	Barcode
2K HS Clearcoat	6	1L	GLC003	5010372016665
2K HS Clearcoat	4	5L	GLC007	5010372016627
Slow Activator for 2K HS Clearcoat	6	1L	GCS010	5010372014616
Standard Activator for 2K HS Clearcoat	4	2.5L	GCS250	5010372016696
Fast Activator for 2K HS Clearcoat	4	2.5L	GCF250	5010372016719



Scratch Resistant Clearcoat

A 2K Water White Clear Acrylic Clearcoat for use in clear-over-base applications. With excellent build, gloss, adhesions and durability, this product is fast drying and is suitable for air-dry, low-bake or infra-red curing. Scratch Resistant Clearcoat requires no thinning and can be applied over most basecoat finishes. Scratch Resistant Clearcoat is excellent for matching different colours.

Product	Case Qty	Size	Code	Barcode
Scratch Resistant Clearcoat	4	4L	RAC004	5010373049501
Scratch Resistant Clearcoat Activator Standard	4	2L	RAC002	5010373049518
Scratch Resistant Clearcoat Activator Slow	4	2L	RSC002	5010373051702



**Variomorphie
Paintwork Perfection...**

Tetrosyl Patented Technology





VM[®] Compound

Incorporates a unique Variomorphic System[®] which delivers a fast cutting action through to a high gloss finish in a single application. Contains a new thermos-suspension technology that without water effectively maintains surface temperature avoiding burns or marks on the paint work.

Product	Case Qty	Size	Code	Barcode
VM [®] Compound	6	880ml	VVM010	5010373073070

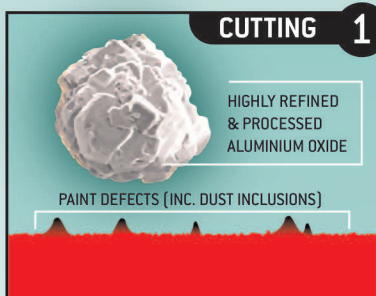
Super VM[®] Compound

The ultimate choice for vehicle refinishing professionals. This fast acting, high performance liquid abrasive removes sanding scratches from both refinished and original paintwork for a good-as-new finish.

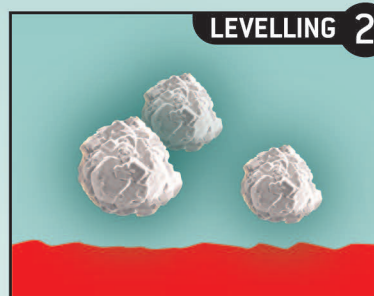
Product	Case Qty	Size	Code	Barcode
Super VM [®] Compound	6	880ml	SVM010	5010373069998



VARIOMORPHIC PROCESS



The coarser form of aluminium oxide is used to remove dust inclusions and other defects.



The aluminium oxide gradually breaks down to equalise the surface.



At its smallest size the aluminium oxide will now work to optimise gloss.

Lubricants, cooling agents and rheology modifiers, have all been carefully blended within this product to ensure no damage will occur to the paintwork such as scratching or burning.

Silicone free. Bodyshop safe.



Final Finish Bodyshop Polish

Incorporates a unique Nanomeric System which delivers a durable high-gloss finish. Made of a unique blend of non-silicones. It will rapidly remove swirl marks with minimum effort.

Product	Case Qty	Size	Code	Barcode
Final Finish Bodyshop Polish	6	880ml	FFB010	5010373069974



SILICONE FREE! BODYSHOP SAFE ideal for removing marks such as finger prints and compound splatter.

Developed as an extremely easy to use, hand applied polish.

Can also be machine applied.

Includes advanced lubricants in the formulation to prevent scratching.



Flash Demon

Using the unique Chromaflair™ light interference pigment technology, Flash Demon provides a mind bending colour shifting effect. Increased pigmentation in the Flash FX™ colour system provides greater covering power, allowing fewer coats and faster throughput.

Flash RainFlo™ uses the revolutionary Spectraflair™ pigment, Flash Rainflo appears silver in low light but under bright light provides a multitude of iridescent colours.



Product	Case Qty	Size	Code	Barcode
Flash Demon Red to Gold	1	1L	FDC001	5010372010588
Flash Demon Gold to Silver	1	1L	FDC002	5010372010595
Flash Demon Green to Purple	1	1L	FDC003	5010372010601
Flash Demon Cyan to Purple	1	1L	FDC004	5010372010618
Flash Demon Blue to Red	1	1L	FDC005	5010372010625
Flash Demon Magenta to Gold	1	1L	FDC006	5010372010632
Flash Demon Silver to Green	1	1L	FDC007	5010372010649
Flash Rainflo Silver	1	1L	FRC001	5010372010656



TM

**Head turning,
Show stopping,
Mind bending...**

FLASH

MAXIMUM *FX*



9

Paints & Primers



Trade Spray

Tetrosyl professional trade sprays are top quality, high performance aerosols for automotive topcoat refinishing. Tetrosyl's acrylic plus formula, along with the adjustable spray nozzle provides a 'spray gun' finish straight from an aerosol. Specially formulated for fast drying with a high quality finish.

Product	Case Qty	Size	Code	Barcode
Grey Primer	12	500ml	ATS010	5010372741208
White Primer	12	500ml	ATS011	5010372741307
Red Oxide Primer	12	500ml	ATS012	5010372741406
Satin Black	12	500ml	ATS013	5010372741505
Matt Black	12	500ml	ATS014	5010372741604
Gloss Black	12	500ml	ATS015	5010372741703
Gloss White	12	500ml	ATS016	5010372741802
Silver Wheels	12	500ml	ATS017	5010372741901
Clear Lacquer (Acrylic)	12	500ml	ATS019	5010372742106
Plastic Primer	12	500ml	ATS020	5010372013831
Fadeout Thinner	12	500ml	ATS022	5010372015293
Charcoal Primer	12	500ml	ATS023	5010372015552





Stonechip

A tough, flexible, corrosion and chip resistant coating for all-round protection and sound deadening qualities. Suitable for all lower body panels vulnerable to stone chips.

Product	Case Qty	Size	Code	Barcode
Stonechip Black (Aerosol)	12	500ml	SCS500	5010372761107
Stonechip Grey (Aerosol)	12	500ml	SCS501	5010372761503
Stonechip White (Aerosol)	12	500ml	SCS502	5010372761602
Stonechip Black	6	1L	SCS010	5010372015316
Stonechip Grey	6	1L	SCS020	5010372015323
Stonechip White	6	1L	SCS030	5010372015330

Tetraschutz

A fine textured, fast drying bitumen based product, Tetraschutz provides excellent rust protection and sound deadening qualities. Suitable for all lower body panels requiring enhanced protection.

Product	Case Qty	Size	Code	Barcode
Tetraschutz (Aerosol)	12	500ml	TSH500	5010372760605
Tetraschutz	12	1L	TSH010	5010372015309



Matting Agent

For use with 2K HS Clearcoat to achieve Satin & Matt finishes. Ideal for use on plastic moulding and bumpers.

Product	Case Qty	Size	Code	Barcode
Matting Agent	6	1L	MTA001	5010372015125

Chassis Paint

A high quality alkyd based paint which provides a tough and durable protection against rust and corrosion together with a decorative gloss finish. Chassis paint can be applied to most suitably prepared surfaces and once fully cured is resistant to petrol, oil and grease.

Product	Case Qty	Size	Code	Barcode
Chassis Paint - Black	2	5L	TBL005	5010372870908
Chassis Paint - Aluminium	2	5L	TAL005	5010372871004



Hot 80 Masking Tape

Semi-translucent masking tape for accurate positioning onto trims, badges and stripes. Excellent adhesion/holding power.

Product	Case Qty	Size	Code	Barcode
Hot 80 Masking Tape	48 Rolls / Case	19mm	VMT019	5010372006987
Hot 80 Masking Tape	36 Rolls / Case	24mm	VMT025	5010372006994
Hot 80 Masking Tape	24 Rolls / Case	38mm	VMT038	5010372007007
Hot 80 Masking Tape	20 Rolls / Case	50mm	VMT050	5010372007014



Trim Mask

Specially developed creped paper and vinyl tape for the masking of rubber trims either straight or angled.

Product	Case Qty	Size	Code	Barcode
Trim Mask	8	50 x 10m	UTM002	5010372010434

Seat / Floor Protectors

High quality disposable seat covers, designed to resist punctures and tears. Boxed in an easy to use dispenser, universally fitting and suitable for the majority of vehicles.



Product	Case Qty	Size	Code	Barcode
Seat Protectors	100 / Case	1320mm x 800mm	UPS001	5010372007847
Floor Protectors	200 / Case	380mm x 500mm	UFM200	5010372011042



**Tetrosyl Technology
leads the way**



Research, Develop, Refine

Aurelia Bold Nitrile Gloves

100% Latex Free, black nitrile gloves. Manufactured to meet EN455 CE Class 1 medical grade, PPE Cat III, EN420, EN388, EN374, EN 1186 Food contact approved and AQL1.S.



Product	Case Qty	Size	Code	Barcode
Nitrile Gloves - Medical Grade Black (Powder Free 100 pack)	10	M	NGB002	9555002105211
Nitrile Gloves - Medical Grade Black (Powder Free 100 pack)	10	L	NGB003	9555002105228
Nitrile Gloves - Medical Grade Black (Powder Free 100 pack)	10	XL	NGB004	9555002105235

Tack Rags

A professional grade Tack Rag for use before spraying, ensuring a top class finish. Removes dust, fluff and gets the vehicle ready for coating. Each rag is individually wrapped.



Product	Case Qty	Size	Code	Barcode
Tack Rags	20	-	UTR001	5010372015217



Underbody Coating Gun

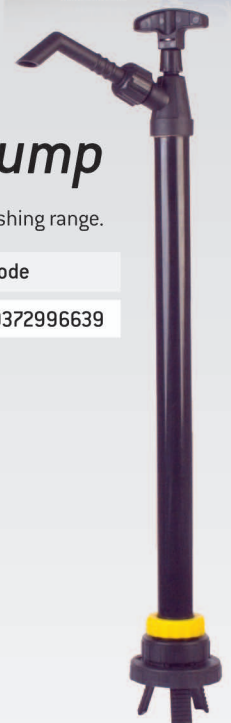
Underbody coating gun is for use with Tetrosyl StoneChip or Tetraschutz 1L products.

Product	Case Qty	Size	Code	Barcode
Underbody Coating Gun	1	Std	UBA000	5010372761008

Berg Thinners Pump

Purpose built to pump solvents from the various 25L barrels in the Refinishing range.

Product	Case Qty	Size	Code	Barcode
Berg Thinners Pump	1	25L	BTP001	5010372996639



Tetrabead Hand Cleaner

A heavy duty hand cleaner for the removal of dirt, grease and oils from hands. Formulated to include polyethylene beads to provide light abrasion. Natural citrus extracts and conditioners cut through dirt and leave your hands feeling fresh.

Product	Case Qty	Size	Code	Barcode
Tetrabead Hand Cleaner	1	15L	TBH015	5010373013601

Tetra Pads Sound Deadening Pads

Tetra Pads are designed to absorb vibrations on metal panels also providing an effective sound insulation.

Product	Case Qty	Size	Code	Barcode
Textured Sound Deadening Pads	10 Pads	200mm	SDP200	5010372833002
Textured Sound Deadening Pads	4 Pads	500mm	SDP500	5010372832906





Additional Products

A variety of products to complete the Tetrosyl refinishing solution.

Product	Case Qty	Size	Code	Barcode
Extra Hardener	12	40g	EXH001	5010372702407
Plastic Spreaders	36	-	PLS003	5010372701806
Tin Lid Clips	1000	-	TCL001	-
Berg Closures	24	25L	BBC000	5010372996523

Lever Lid Tins

Empty lever lid tins perfect for holding pre-mixed solvent based paints ready for the customer. (Not suitable for waterborne paints).

Empty waterborne lever lid tins are specially lacquered to make them perfect for holding pre-mixed waterborne paints ready for the customer.

Product	Case Qty	Size	Code	Barcode
Empty Lever Lid Tin	48	250ml	EMP250	5010372996356
Empty Lever Lid Tin	115	500ml	EMP005	5010372832104
Empty Lever Lid Tin	57	1L	EMP100	5010372832203
Empty Lever Lid Tin	36	2.5L	EMP025	5010372832302
Empty Lever Lid Tin	24	5L	EMP500	5010372832609
Empty Waterborne Lever Lid Tin	48	250ml	WBT250	5010372014159
Empty Waterborne Lever Lid Tin	115	500ml	WBT005	5010372014166
Empty Waterborne Lever Lid Tin	57	1L	WBT100	5010372014173
Empty Waterborne Lever Lid Tin	36	2.5L	WBT025	5010372014180
Empty Waterborne Lever Lid Tin	24	5L	WBT500	5010372014197





Tetrosyl



FINISHING TECHNOLOGY

Technology created and manufactured in the UK